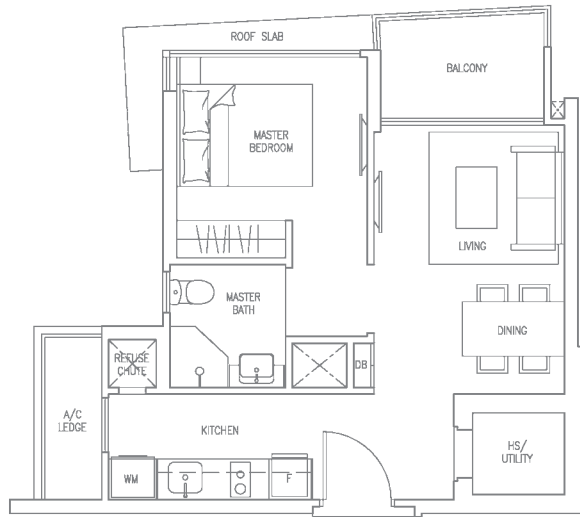


CONDOMINIUM

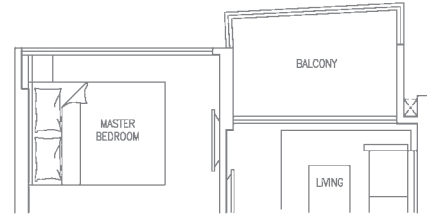
TYPE A1 (1-BEDROOM)

Unit #02-20, #06-20 & #10-20
 #02-24, #06-24 & #10-24
 #02-26, #06-26 & #10-26
 #02-31, #06-31 & #10-31
 Area 484 sqft / 45 sqm



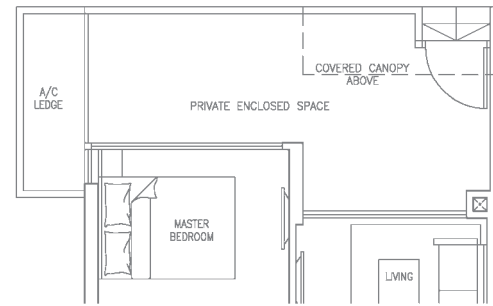
TYPE A1c (1-BEDROOM)

Unit #05-20, #09-20 & #13-20
 #05-24, #09-24 & #13-24
 #05-26, #09-26 & #13-26
 #05-31, #09-31 & #13-31
 Area 484 sqft / 45 sqm



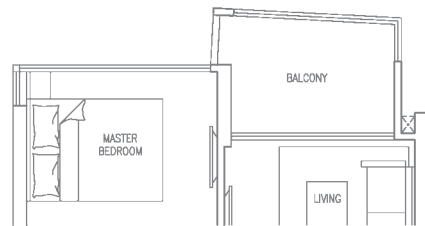
TYPE A1P (1-BEDROOM)

Unit #01-31
 Area 592 sqft / 55 sqm



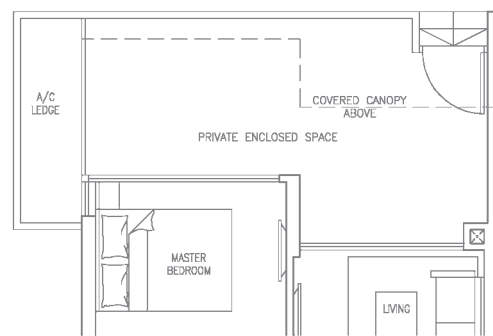
TYPE A1a (1-BEDROOM)

Unit #03-20, #07-20 & #11-20
 #03-24, #07-24 & #11-24
 #03-26, #07-26 & #11-26
 #03-31, #07-31 & #11-31
 Area 484 sqft / 45 sqm



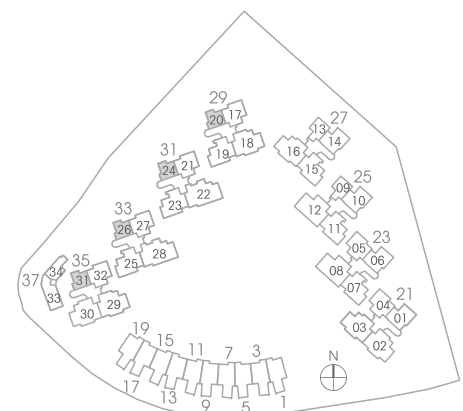
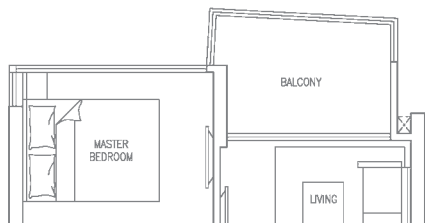
TYPE A1Pa (1-BEDROOM)

Unit #01-20
 #01-24
 #01-26
 Area 624 sqft / 58 sqm



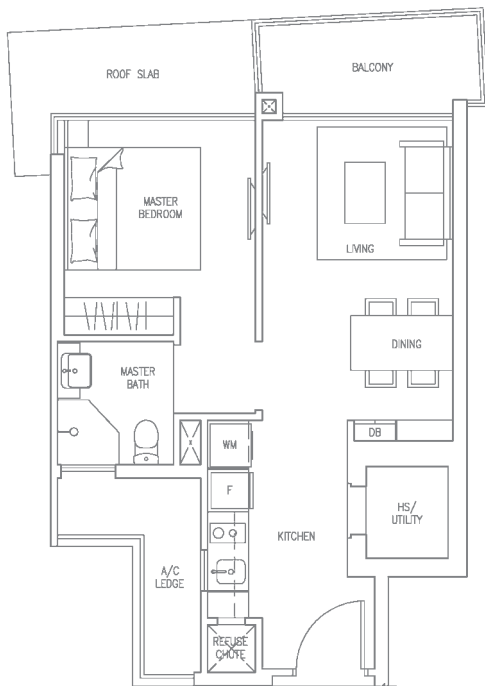
TYPE A1b (1-BEDROOM)

Unit #04-20, #08-20 & #12-20
 #04-24, #08-24 & #12-24
 #04-26, #08-26 & #12-26
 #04-31, #08-31 & #12-31
 Area 484 sqft / 45 sqm



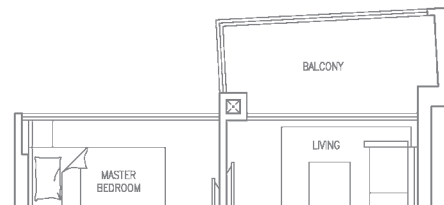
TYPE A2 (1-BEDROOM)

Unit #02-09, #04-09, #06-09, #08-09, #10-09 & #12-09
 #02-13, #04-13, #06-13, #08-13, #10-13 & #12-13
 Area 527 sqft / 49 sqm



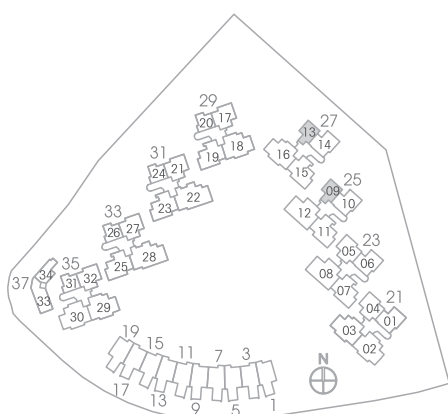
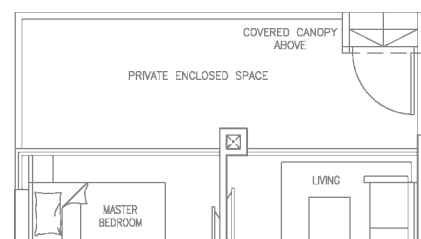
TYPE A2a (1-BEDROOM)

Unit #03-09, #05-09, #07-09, #09-09, #11-09 & #13-09
 #03-13, #05-13, #07-13, #09-13, #11-13 & #13-13
 Area 527 sqft / 49 sqm



TYPE A2P (1-BEDROOM)

Unit #01-09
 #01-13
 Area 603 sqft / 56 sqm



The plans are for general guidance only and subject to changes as may be approved by the relevant authority. The floor plans are approximate measurements and subject to final survey.

Building Plan no. : A1754-00001-2012-BP01 approved on 25 July 2012